

# WR3 AIR

*the cardio pool bike*

**CARDIO**

**ENDURO**

**SPINNING**



**LIGHTWEIGHT**  
**14,9Kg**

### PACK SPORT INCLUDED



Isotherm bottle

Bottle holder

Comfort saddle

**PEDALS**  
**AQUA DOUBLE SPEED**  
**+54%**  
**RESISTANCE**



**INTENSITY** Soft to moderate



**GOALS**

*Boost your cardio  
& refine your silhouette*



**ALUMINUM**  
**ANODISED**  
**STRUCTURE**

**AQUABIKE ALU**  
WR3 AIR

**40%**  
LIGHTER THAN  
STAINLESS  
STEEL

**ALUMINUM  
ANODISED  
STRUCTURE**

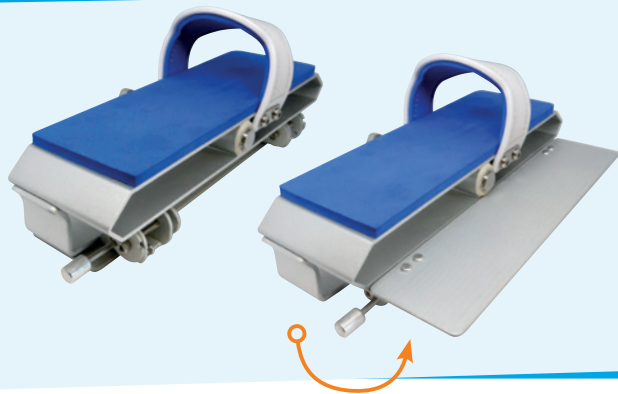


**INNOVATION**

Its new structure **6063 T6 anodized aluminum** allows it to display a featherweight of **14,9kg**, ideal for **pool entrances and exits**, while ensuring perfect rigidity. Coupled with its wide feet and silicone suction cups, the WR3 AIR is easy and reassuring to use.

Its multiple adjustments of the feet, the saddle and the handlebars, as well as its pedals with variable resistance make them resolutely versatile.

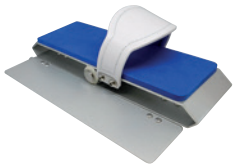
**AQUA DOUBLE SPEED PEDALS**



**+54%**  
RESISTANCE



Designed with a flap under the pedal to create additional resistance. Pedal closed, you have a soft resistance for warm up, open the flap and double the intensity. Customize your workout with this unique pedal.



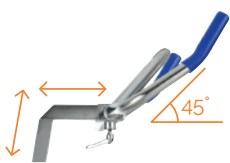
**BAREFOOT USE**

Its foam covers the pedal as well as the inside of the strap to limit the irritations, even during intense efforts.



**EXPRESS DRAINAGE**

Innovative system of targeted perforations allowing the structure to fill or empty water in a few seconds. Combined with its light weight, the entrances and exits of pools are extremely easy.



**MULTI-POSITION HANDLEBAR**

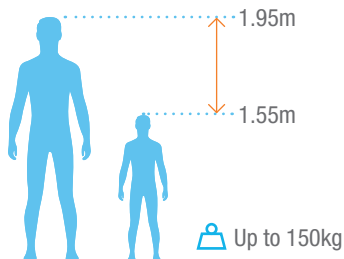
Its studied design and its multiple settings offer many positions depending on the exercises. Its 45° angle allows a more upright sitting to relieve lumbar pain.



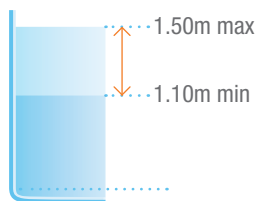
**SACRIFICIAL ANODE**

A well-known method in the marine environment, the sacrificial anode plays a fuse to prevent corrosion from seizing metal parts. It is not very visible and planned to change easily once completely corroded.

**ERGONOMICS FOR ALL**



**ALL POOLS**



Quality	Aluminum Tech T6
Finition	Anodizing 15µm
Dimensions closed	L 99 cm x l 55.90 cm x H 113.70 cm
Weight	14,9 kg
Water Depth	1.10 m to 1.50 m
Warranty	2 years metal parts / 6 months wear parts
Ref	WX-WR3A

REVENDEUR AGRÉÉ

Certification :

Edition August 2020

For more information  
about our products and services  
[www.waterflex.fr](http://www.waterflex.fr)