

TREATMENT BY ELECTROLYSIS

25 to 115m³

Natural & ecological
disinfection

POOLEX
FOLLOW THE EXPERT

CHLOE ELECTROLYSER



POOLEX
Chloe

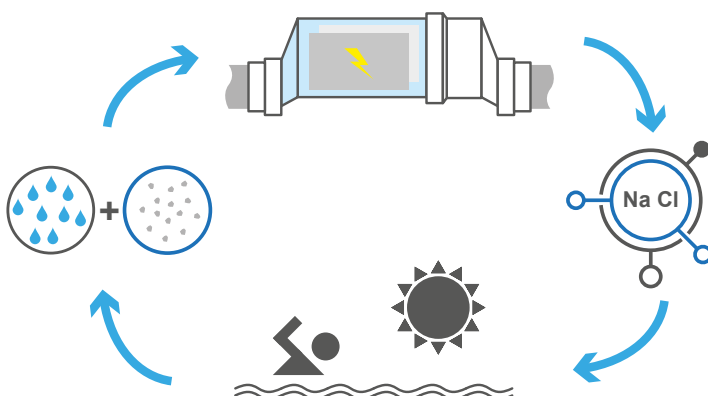
SWIMMING POOL ELECTROLYSER CHLOE

Pool Salt Treatment

- Low salinity operation: 3,2g/L
- Natural disinfection without chemical product or odour, soft to the skin
- Automatic pool cover detector to limit chlorine production
- "Long life" self-cleaning titanium cell by reversed polarity
- Salinity and flow level control for easy maintenance
- Intuitive control panel for quick understanding

WARRANTY 5 YEARS

4 VERSIONS AVAILABLE



Operating principle

Electrolysis disinfection is a chemical process that transforms the salt in water into a disinfecting agent (hypochlorite ions). This hypochlorite is re-transformed into salt when it comes in contact with organic compounds (bacteria, cells) or under the effect of light, as such renewing the cycle to move through the electrolyser again.

Reference	CL-CL10	CL-CL15	CL-CL20	CL-CL30
Swimming pool volume (m ³)	35	50	75	115
Production g/h	10	15	20	30
Connection	50mm			
Salinity	3.2 to 4ppm			
Protection	IP64			
Automatic cover detection	Yes			
Self-cleaning	Automatic by reverse polarity			
Alarms	Salt level too high / too low, insufficient water flow			
Cell orientation	Horizontal			
Control panel dimensions	230 x 360 x 145 mm			
Cell dimensions	Length 40cm with connectors - DN 50mm			
Modes	Automatic / Winterizing / Shock chlorine			
Warranty panel + cell	5 years			

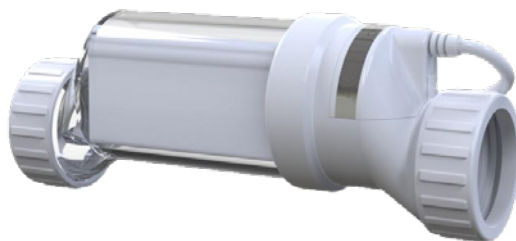
Don't focus on its small size, because the Chloé electrolyser proves its power through its features. It works by electrolysing the salt which has been added to the pool water beforehand and provides effective, odourless disinfection without the need to add any chemical product, and it's gentle on the skin.

Chloé, which operates from 3.2 g/L of salt in the water and is available in 4 versions for pools from 25 to 115 m³, stands out thanks to its different operating modes (Automatic, Winterizing or Shock Chlorination), its intuitive control

panel and, above all, its reverse polarity self-cleaning titanium cell.

Maintenance is child's play as it is equipped with different sensors. These can be used to stop the electrolysis if salt level or water flow is too low and, as such, protect the cell.

In addition, Poolex proposes an automatic cover detection module which automatically limits chlorine production when the pool is covered.



Cell with titanium plates



Electrolysis cell

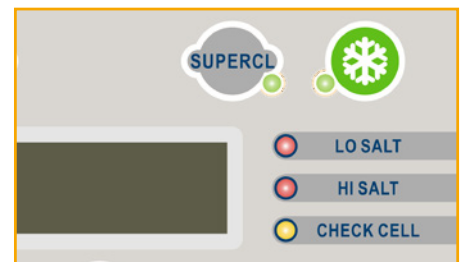
The Chloé electrolysis cell is made of Ruthenium-coated titanium plates.

This surface treatment reduces clogging and is combined with a reverse polarity self-cleaning system.



Flow detector

The Chloé electrolyser is equipped with a flow detector (aka flow switch) and a salt level detection system. These two features combined enable you to safely and easily tailor chlorine production for an optimized cell's lifetime.



"Shock Chlorine" mode

One-shot intensive use? An incident impacting your pool's hygiene? The SuperChlorine mode enables you to increase chlorine production to 100% for 24h to treat your pool immediately.